

Beech Tree Avenue, Leeds, LS5

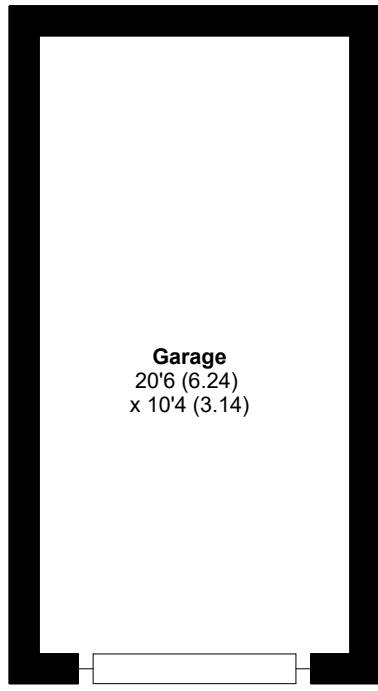


Approximate Area = 1293 sq ft / 120.1 sq m

Garage = 211 sq ft / 19.6 sq m

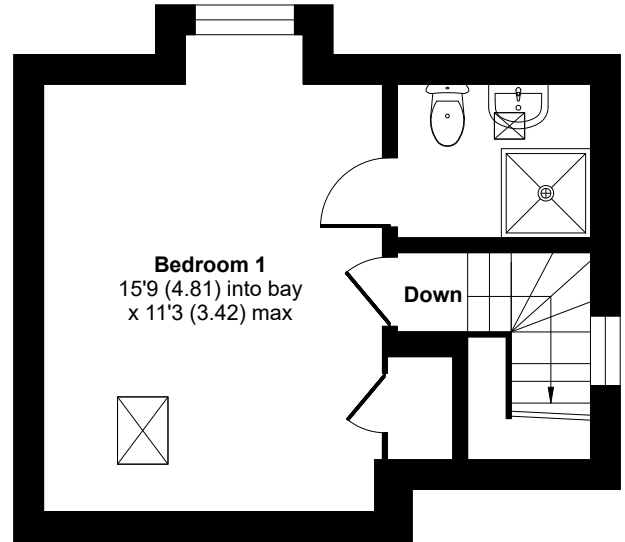
Total = 1504 sq ft / 139.7 sq m

For identification only - Not to scale



Garage
20'6 (6.24)
x 10'4 (3.14)

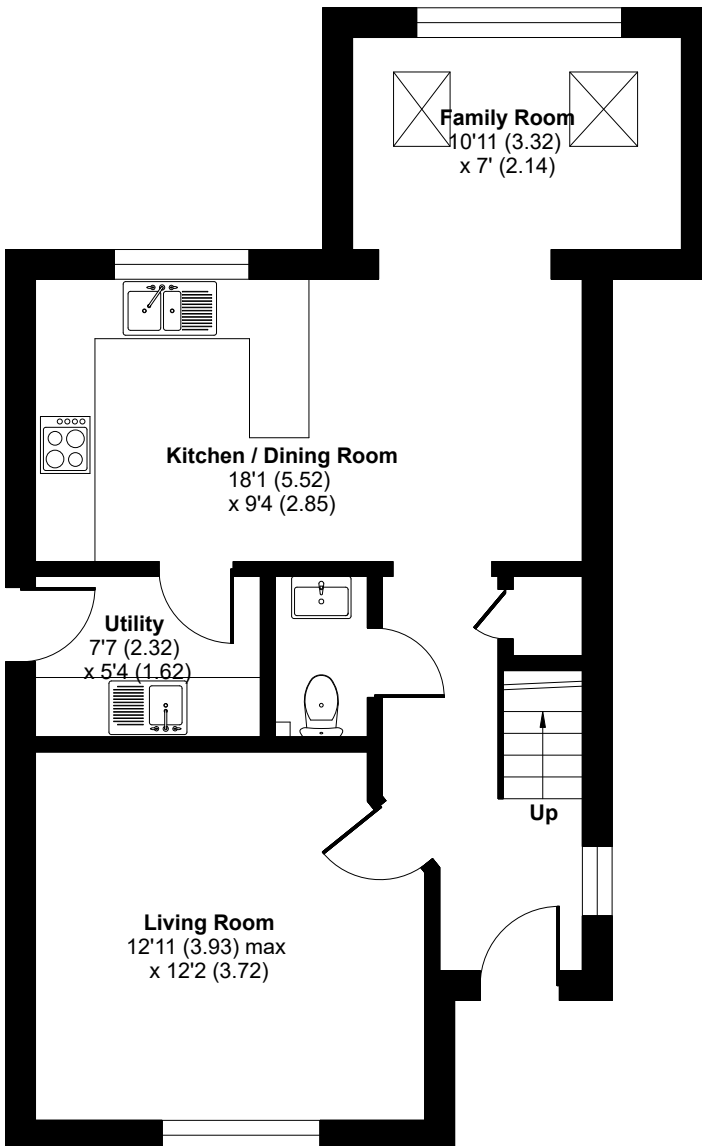
GARAGE



Bedroom 1
15'9 (4.81) into bay
x 11'3 (3.42) max

Down

SECOND FLOOR



Family Room
10'11 (3.32)
x 7' (2.14)

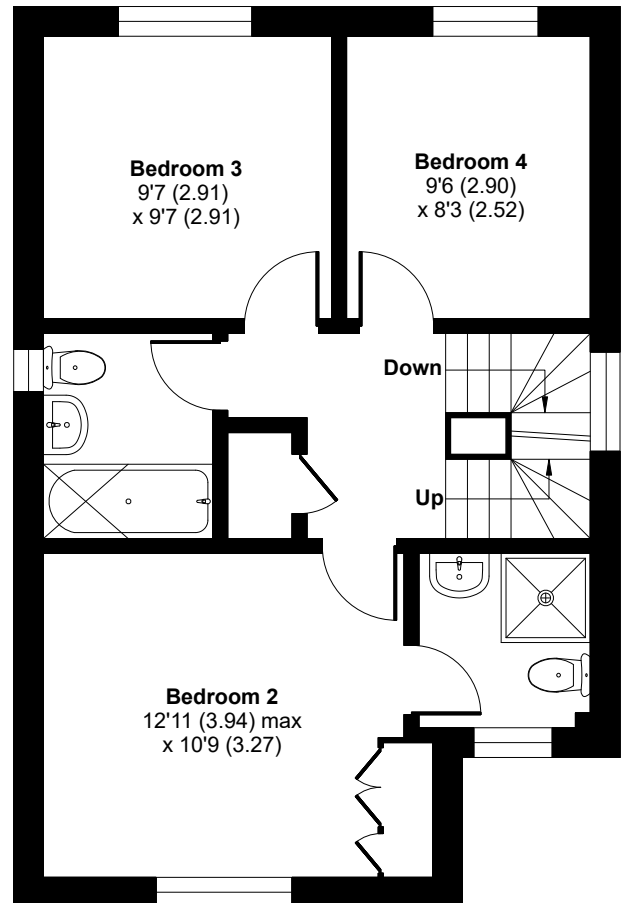
Kitchen / Dining Room
18'1 (5.52)
x 9'4 (2.85)

Utility
7'7 (2.32)
x 5'4 (1.62)

Living Room
12'11 (3.93) max
x 12'2 (3.72)

Up

GROUND FLOOR



Bedroom 3
9'7 (2.91)
x 9'7 (2.91)

Bedroom 4
9'6 (2.90)
x 8'3 (2.52)

Down

Up

Bedroom 2
12'11 (3.94) max
x 10'9 (3.27)

FIRST FLOOR